



Issue 14 | 6/03/11

petMD.com

News

Centers

Blogs

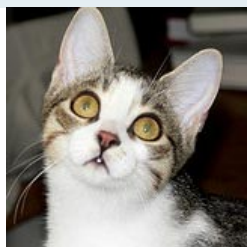
NationalPetPharmacy.com



Have You Made Emergency Preparations for Your Pets?

Preparing for an emergency ahead of time could mean the difference between life and death for your pets. This year's unpredictable spring weather has hit many parts of the United States and left communities in peril. The Midwest continues to suffer from the deadliest tornado season in U.S. history, flooding has affected both the East and West coasts, and Texas continues to brave through drought. That still leaves us with hurricanes, fires and earthquakes to worry about. In this week's issue we cover the current rescue efforts of animal welfare organizations around the country. We also give you tips on how to prepare ahead of time, before your community is threatened by a natural disaster, including what to put in your pet emergency kit. Your pets rely on you the most when disaster strikes, so please be prepared.

Health



BLOODY URINE

It can be a scary sight to see, and if not treated, may become fatal. Learn what causes this in cats and how to best manage it.

Emergency



ELECTRIC SHOCK

Dogs can come into contact with a live power source in various ways. Know how to take proper action in a worst case scenario.

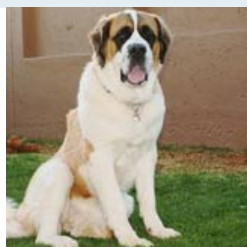
News



PET FOOD RECALL

Primal Pet Foods is recalling some of their Feline Chicken & Salmon Formula due to possible Salmonella contamination.

Dog Breed



SAINT BERNARD

Her ability to rescue snow-trapped victims makes the Saint Bernard a top choice for outdoor travelers in the colder climates.

Top 10



PET DISASTER KIT

Is your family prepared for severe weather? This guideline will help you and your pets prepare for the worst.

Cat Breed



SIAMESE

Did you know the Siamese cat guarded Tibetan temples? This vocal feline is not just protective, though, he's affectionate too.

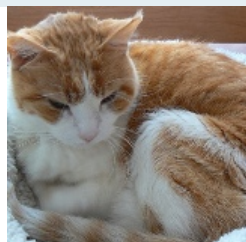
Fully Vetted



ZOMBIE APOCALYPSE

Why the U.S. Centers for Disease Control and Prevention (CDC)

The Daily Vet



THE TOUGHEST DECISION

People struggle with the decision

Purely Puppy



TOO MUCH EXERCISE?

How old should your puppy be before she's allowed to exercise?