



Issue 15 | 6/17/11

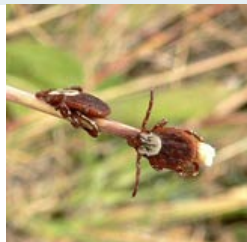


Planning Pet-Friendly Trips

Are you and your family planning to travel on vacation this summer? Are you sneaking a guilty glance at your family pet as you're reading this, thinking, "Time to make boarding arrangements for Fluffy (or Kitty). I sure wish I could take them along. If only I had more options." Well, you can take your pet with you when you travel. Whether you're driving long distance to a camping spot, or flying to an international destination and resting in luxurious lodgings, petMD can help you prepare every step of the way. We've provided information from pet concierge services to government guidelines on traveling abroad, and where to go if your pet gets sick far from home. Happy tails – erm, trails!

DID YOU KNOW?
Pet travel has increased **300 percent** since 2005.
Source: Bark BuckleUp

Health Emergency News



FLEA ALLERGIES
Most of us know they are capable of transmitting all sorts of diseases to our pets. But did you know some cats are also allergic to fleas?



GONE FISHIN'
There's nothing quite like fishing with your dog. However, there are also many hazards involved, including fishhooks.

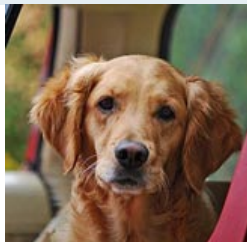


NEW AMERICAN FAMILY
According to the first annual petMD Pet Owners Survey, the bond U.S. pet owners share with their pets is impactful.

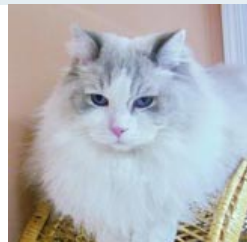
Dog Breed Top 10 Cat Breed



COCKER SPANIEL
This small canine breed is easily trained to behave, even during long road trips. Their stature makes them easy to transport, too!



TRAVEL CHECKLIST
Because every good trip should begin with a checklist -- especially if you're traveling with a pet.

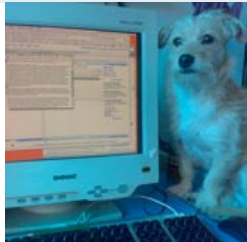


RAGDOLL
This "gentle giant" feline is known for its docile disposition and calm demeanor, making it an excellent travel companion.

Fully Vetted The Daily Vet Purely Puppy



TAX RELIEF
How a recent U.S. Tax Court decision has set a precedent for animal charity volunteers looking to deduct expenses.



LIVING WILLS FOR PETS
You're on vacation thousands of miles away when your pet suddenly develops a severe health condition. Now what?



DOGGIE DAY CARE
Thirteen questions every dog owner should ask their day care facility to make sure it's a safe, reputable spot.